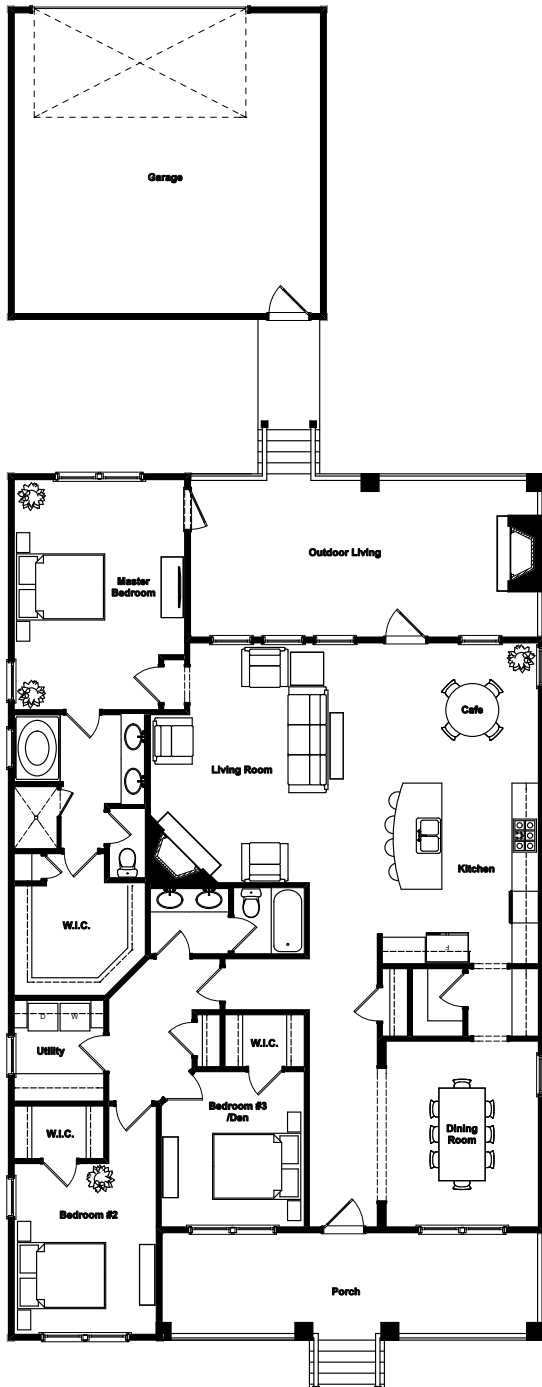


SALUDA RIVER CLUB

MAULDIN

Limestone Residential | Village District
3 Bedrooms | 2 Baths | 2049 Sq. Feet



This little charmer will delight you. It is a one level, 3 bedroom home complete with an ample family room, kitchen with attractive island and eat-in area as well as outdoor living space with a fireplace. The master suite features all the high-end finishes that are characteristic of Saluda River Club. The detached garage can be customized to a 3-car capacity to better suit your needs.

Master Bedroom	- 13-0 x 17-0	Kitchen	- 12-0 x 14-0
Bedroom #2	- 11-0 x 13-0	Cafe	- 12-0 x 11-0
Bedroom #3 / Den	- 11-0 x 12-0	Garage	- 23-4 x 24-0
Living Room	- 17-0 x 19-0	Outdoor Living	- 26-0 x 12-0
Dining Room	- 11-0 x 14-4	Porch	- 28-0 x 8-0

SaludaRiverClub.com • 803.358.3969

Sales and Marketing by Saluda River Club Realty, LLC. Information contained herein is believed to be accurate but not warranted. Information subject to change without notice.

